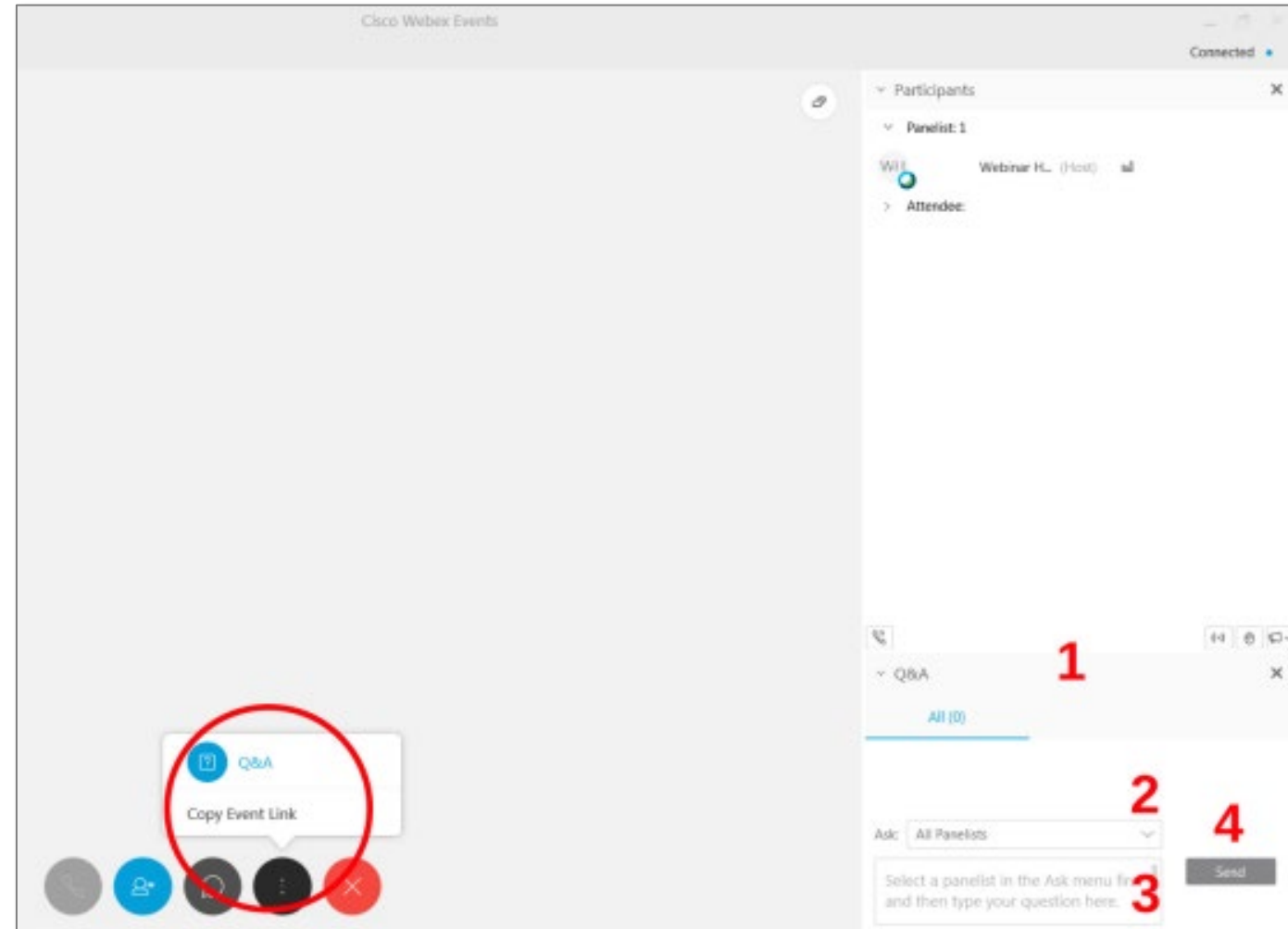


COVID-19: Protecting Voter Health and Participation in the 2020 Elections

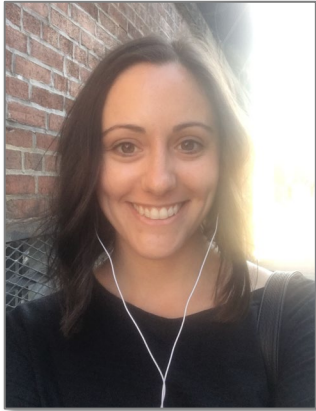
July 16, 2020 | 1:00 – 2:30 PM ET

How to Use WebEx Q & A

1. Open the Q&A panel
2. Select “All Panelists”
3. Type your question
4. Click “Send”



Moderator



Lauren Boc, MPH, Senior Partnerships
Manager at Voting Rights Lab

- M.P.H., Columbia University Mailman School of Public Health

Presenter



Dawn Hunter, MPH, Deputy Director,
Network for Public Health Law –
Southeastern Region Office

- J.D., Stetson University College of Law
- M.P.H., University of South Florida

Presenter



Jiggy Athilingam, PhD, Associate
Director of Campaigns & Partnerships at
Voting Rights Lab

- Ph.D., University of California, San Francisco

Presenter



Ryan Snow, Legal Fellow, Voting Rights Project, Lawyers' Committee for Civil Rights Under Law

- J.D., University of Virginia School of Law



COVID-19 and the 2020 Election:

Voter Participation and Election Administration

Presented July 16, 2020

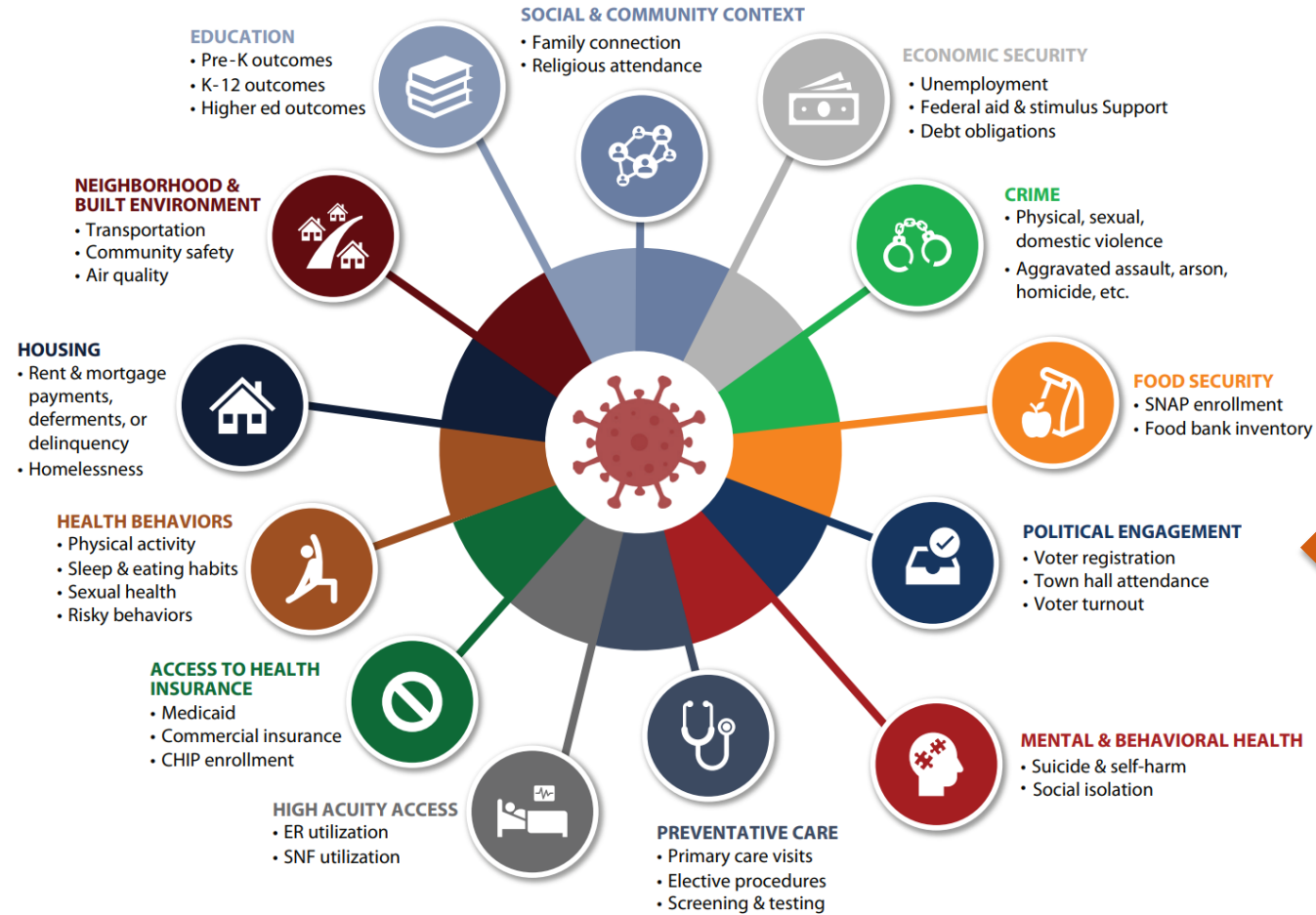
Dawn Hunter, JD, MPH

Deputy Director, Network for Public Health Law – Southeastern Region

Overview

- » **The Impact of COVID-19**
- » **Civic Engagement and Health**
- » **Elections: Access, Authority, Safety and Security**
- » **Engaging Voters**

Impact of COVID-19 on Wellbeing



Source: Governor's Office of Management and Budget, Leavitt Partners

Utah Leads Together, Vol. III, May 20, 2020

Civic Engagement and Health

» Civic Engagement is:

- Defined by activities like voting, volunteering, membership in community groups, and activism.
- A component of Social and Community Context, one of the social determinants of health.
- Associated with Self-Rated Health.



Excellent



Good



Fair

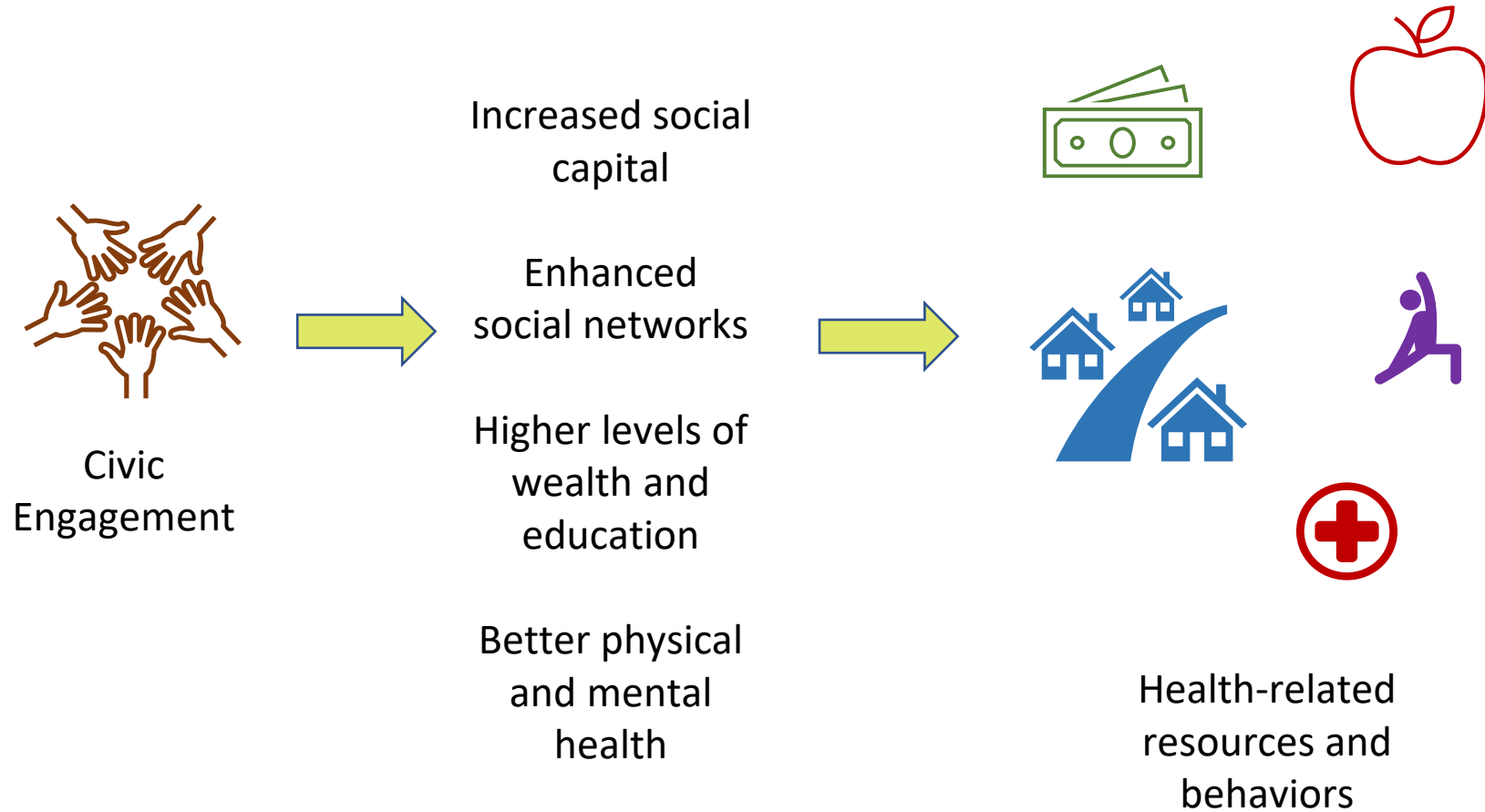


Poor

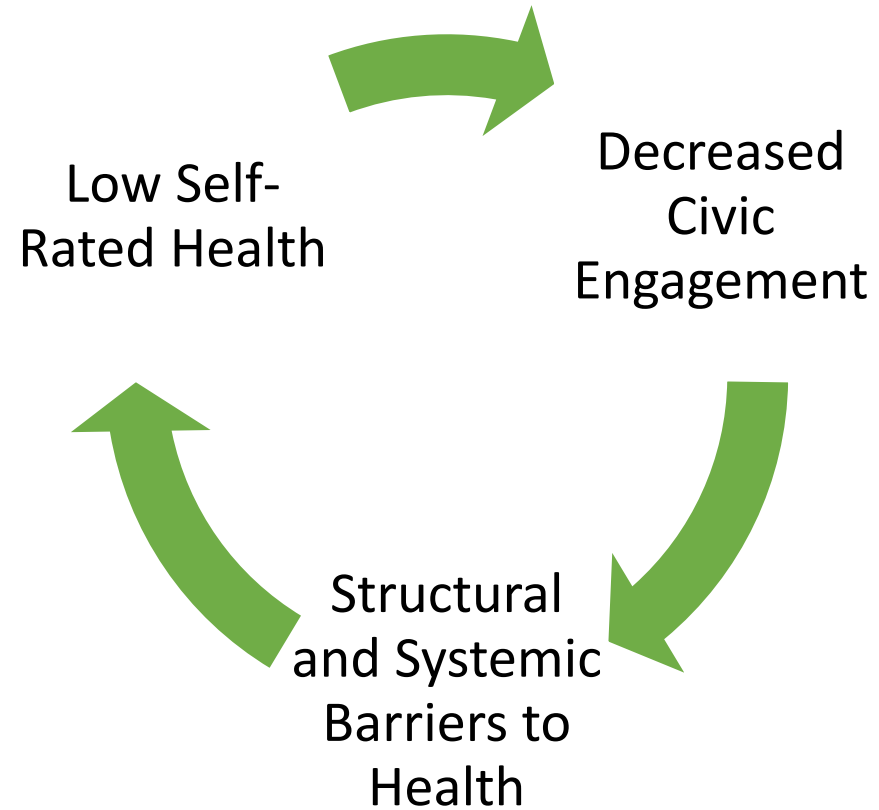


Very Poor

Civic Engagement and Health



Disparities in Civic Engagement and Health



Civic Engagement and Health



[This Photo](#) by Unknown Author is licensed under [CC BY](#)

Socioeconomic inequality leads to:

- **Decreased voter turnout and engagement**
- **Lower Self-rated Health**
- **Declines in social trust and cohesion**
- **Increased mortality**

Elections: Access, Authority, Safety and Security

- » **Ensuring Equity and Accessibility**
- » **State Responses to COVID-19 and Elections**
- » **Emergency Election Authority**
- » **Policy Considerations**

Ensuring Equity and Accessibility

- » **Equity:** Removing barriers to full participation to reduce or eliminate disparities.
- » **Accessibility:** Ensuring that polling locations are easy to approach, enter, participate in or use by all voters.

Who is impacted

- Voters of color
- Students/youth voters
- Voters with disabilities
 - Homeless and incarcerated voters
- Voters in rural areas and on American Indian reservations
- Voters who speak other languages

Barriers to voting

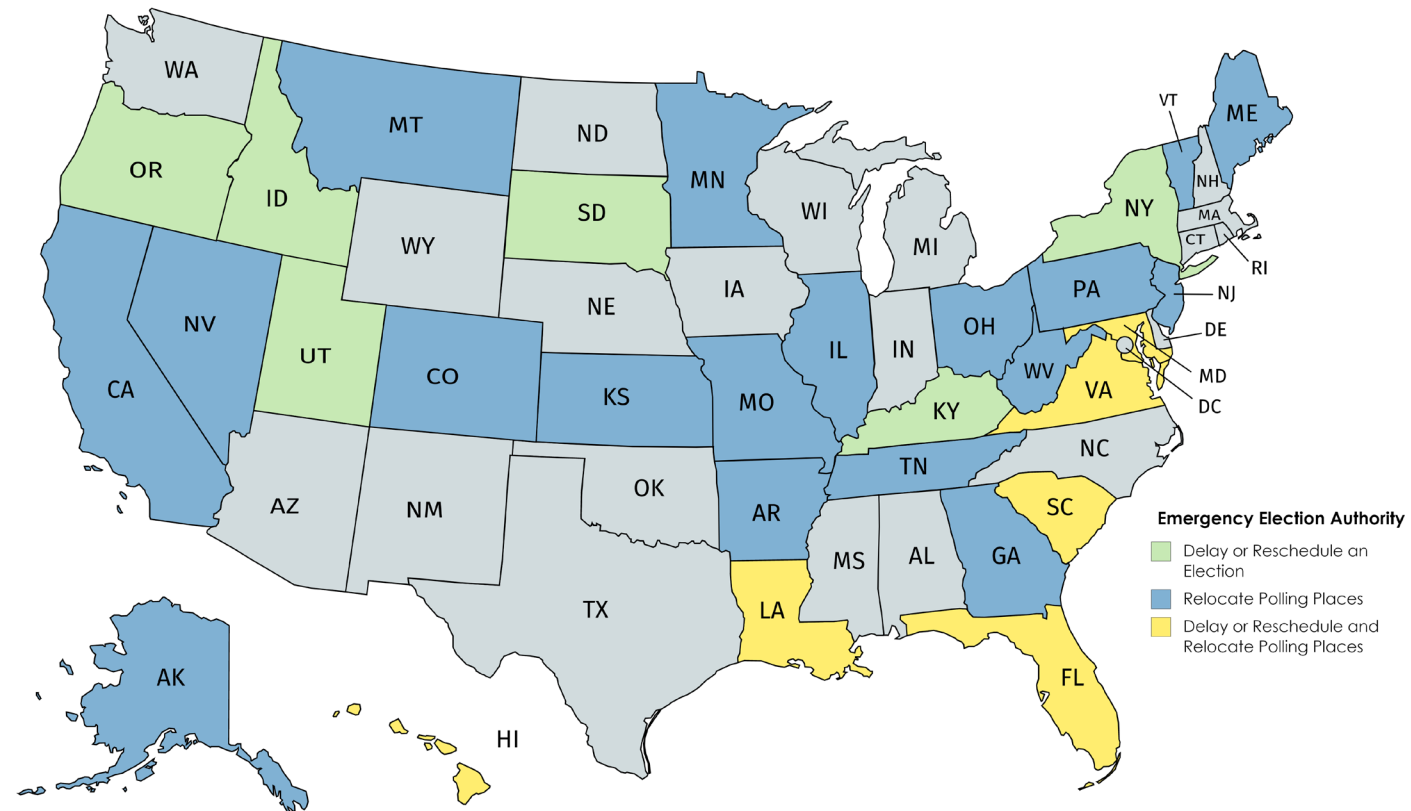
- Identification
- Lack of multilingual voting materials
- Transportation/access
- Registration options
 - Polling locations
 - Time to vote

State Responses to COVID-19 and Elections

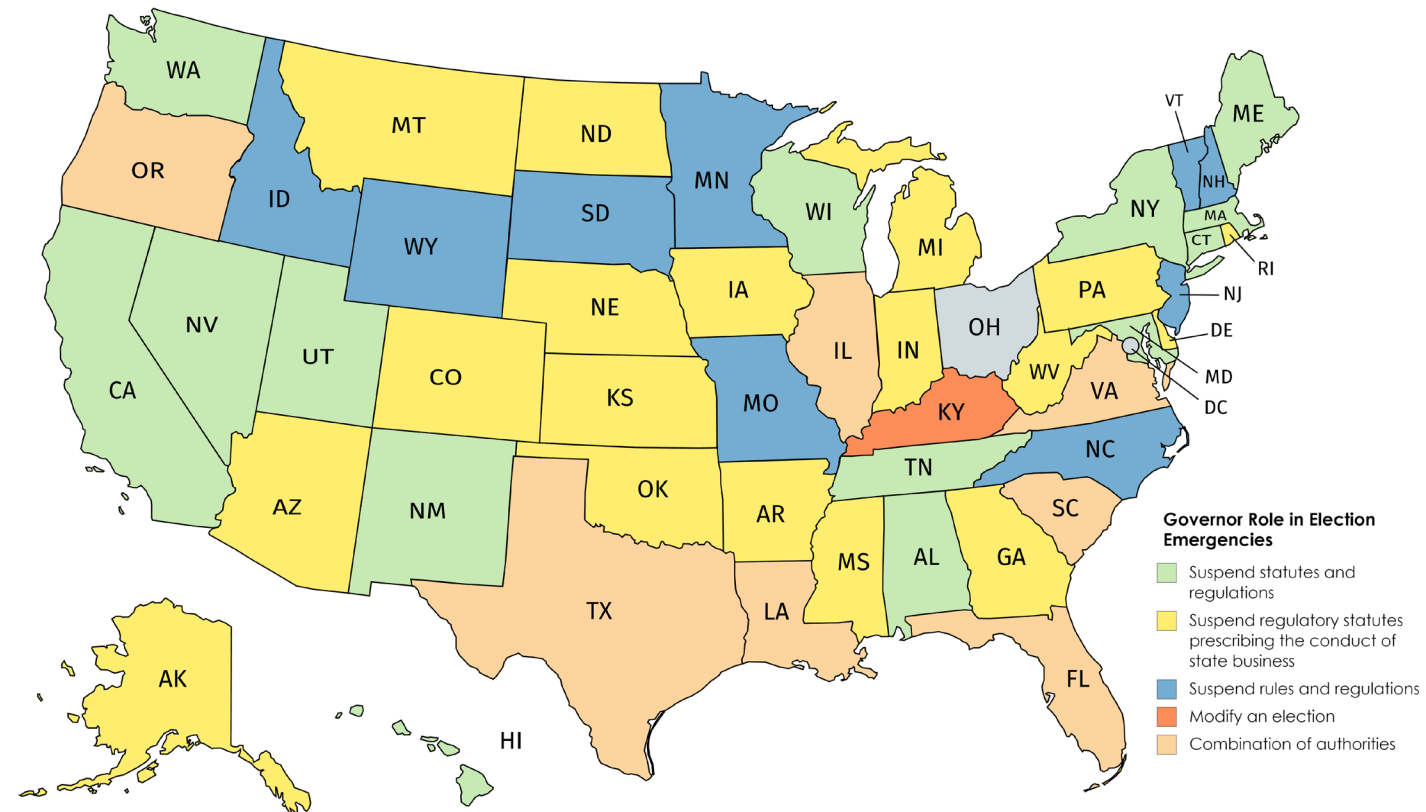
» **Actions by state legislatures, executives, and election officials include:**

- Delaying or postponing elections or granting emergency authority
- Absentee and mail voting – expanding options, allowing public health concerns to be an excuse, and changing signature requirements
- Changing requirements for candidates

Emergency Election Authority



Emergency Election Authority



Policy Considerations

- » **Requiring written contingency plans**
- » **Processing absentee ballots**
- » **Expanding the list of acceptable reasons to request an absentee ballot**
- » **Moving polling locations to reduce impact on vulnerable populations**
- » **Curbside voting for voters with disabilities**
- » **Evaluating ballot measure and candidate filing deadlines**

Election Safety and Security

- » **CDC Guidance**
- » **CARES Act**
- » **Poll Workers**
- » **Polling Locations**

CDC Guidance

Provide a variety of voting options, longer voting periods, and other options that reduce congregation of voters.

Election Officials and Poll Workers	Healthy Environments	Healthy Operations	Voters
<ul style="list-style-type: none"> • Stay home if sick • Hand hygiene & respiratory etiquette • Face coverings • Adequate supplies • Signs and messages to promote health and safety • Social Distancing 	<ul style="list-style-type: none"> • Clean and disinfect surfaces and voting-associated equipment • Make typically shared objects single use or minimize handling • Ventilation • Crowd and line management • Modified layouts and procedures • Physical barriers to protect workers and voters, markers or decals on floor 	<ul style="list-style-type: none"> • Offer alternative voting methods (early voting, extended hours, drive-up voting, off-peak voting) • Protect people at increased risk – in selection of polling locations • Alternatives for voters with symptoms • Scheduled or staggered voting • Mail-in ballots 	<ul style="list-style-type: none"> • Practice Healthy Behaviors • Consider voting alternatives available in jurisdiction • Avoid crowds • Be prepared (take your own pen or stylus, complete sample ballot at home)

CARES Act

Provided an additional \$400 million in Help America Vote Act emergency funding to ensure the health and safety of voters and election workers during the COVID-19 outbreak.

Allowable spending costs under emergency HAVA grants awarded in response to the Covid-19 outbreak

The additional \$400 million in emergency HAVA funds awarded under the CARES Act can cover these costs incurred because of the Covid-19 pandemic.



Purchase of cleaning supplies to disinfect polling stations and voting equipment



Costs to pay for unanticipated increase of mailed absentee ballots due to voter self-isolation and quarantine during Covid-19



Costs related to cancellation fees for meetings, training or travel without prior approval as well as costs incurred for pausing and restarting activities



Purchase of protective masks for staff and poll workers



Hiring of temporary staff to process unanticipated increased demand for absentee ballots



Costs incurred to conduct virtual training to improve administration of federal elections



Purchase of laptops for election staff working remotely during the pandemic



Costs incurred to communicate changes in voting processes due to the pandemic



Costs to lease polling facilities instead of using assisted living facilities as polling places

By Cristina Rivero, POLITICO Pro DataPoint

Poll Workers

State law sets requirements for:

- » **Voter registration status**
- » **Age**
- » **Residency**
- » **Training**
- » **Compensation**
- » **English Fluency**
- » **Student Election Assistants**

U.S. Election Assistance Commission

STATE-BY-STATE COMPENDIUM

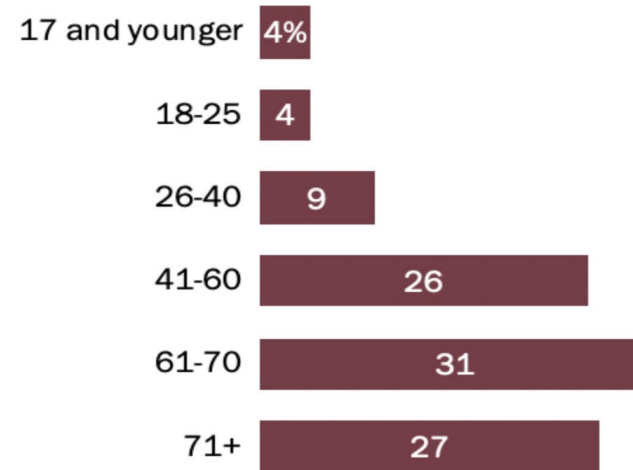
Election Worker Laws & Statutes

https://www.eac.gov/sites/default/files/eac_assets/1/28/Compendium.2016.pdf

Poll Workers

Majority of U.S. poll workers are over 60

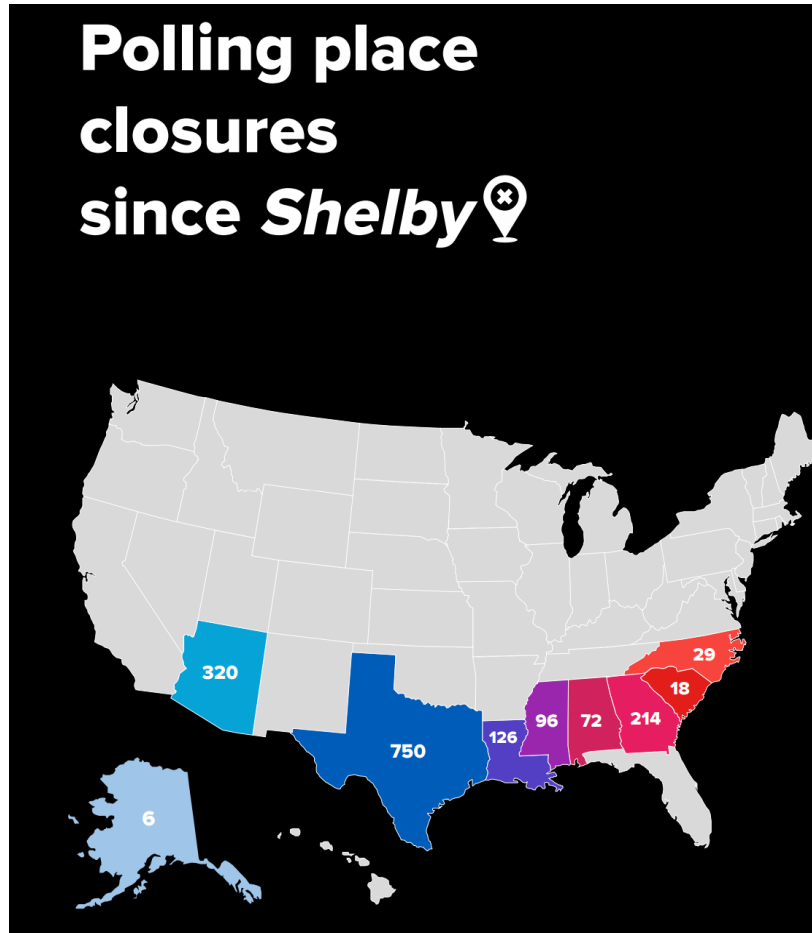
% of U.S. poll workers in the 2018 general election who were ages ...



Note: Not all jurisdictions reported poll worker age; based on all poll workers whose age was known. See 2018 EAVS report for details.
Source: 2018 Elections Administration and Voting Survey.

PEW RESEARCH CENTER

Polling Locations – *Shelby County v. Holder*



Texas

Closures.....750
Latino.....39%
Black.....12%



Arizona

Closures.....320
Latino.....30%
Black.....4%
Native American....4%



Georgia

Closures.....214
Latino.....9%
Black.....31%

Polling Locations

Vote Centers

Consolidated Polling Sites

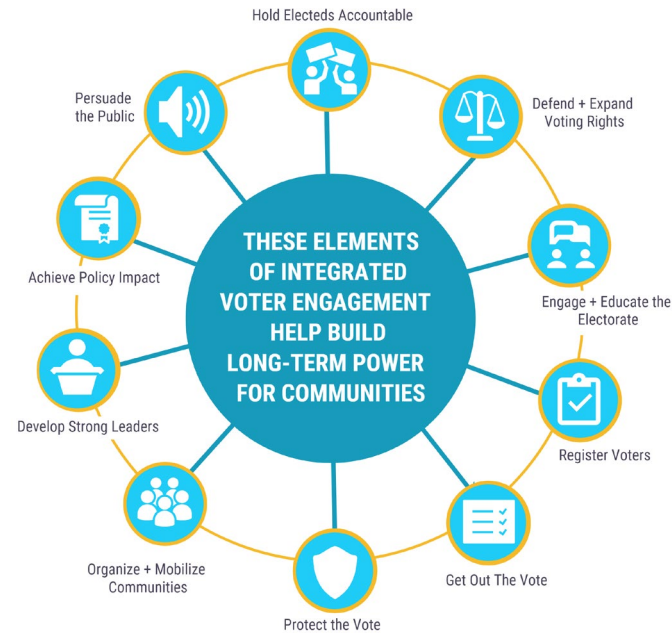
Precinct-specific Polling Site



California Secretary of State

Engaging Voters

- » **Voter Registration**
- » **Integrated Voter Engagement**
- » **Voter Education**



Funders Committee for Civic Participation



The Civics Center



How does your vote connect to the criminal justice system? Here's a breakdown of the elected offices that could be on your ballot:

Register to vote at [WhenWeAllVote.org](https://www.WhenWeAllVote.org)

- A MAYOR** or another local government official usually appoints the chief of police in their city to manage law enforcement.
- A SHERIFF** is typically an elected position that oversees a county and is responsible for enforcing the law.
- DISTRICT ATTORNEYS** are considered the top law enforcement officials because they decide when an arrest leads to a charge. They can either be elected or appointed depending on your state or county.
- SENATORS AND REPRESENTATIVES IN CONGRESS** create federal laws and have the power to reform the criminal justice system through legislation.

Register to vote at [WhenWeAllVote.org](https://www.WhenWeAllVote.org)

WhenWeallVote.org



Supporters

The Network for Public Health Law is a national initiative of the Robert Wood Johnson Foundation.



PROTECTING PUBLIC HEALTH IN THE 2020 ELECTIONS



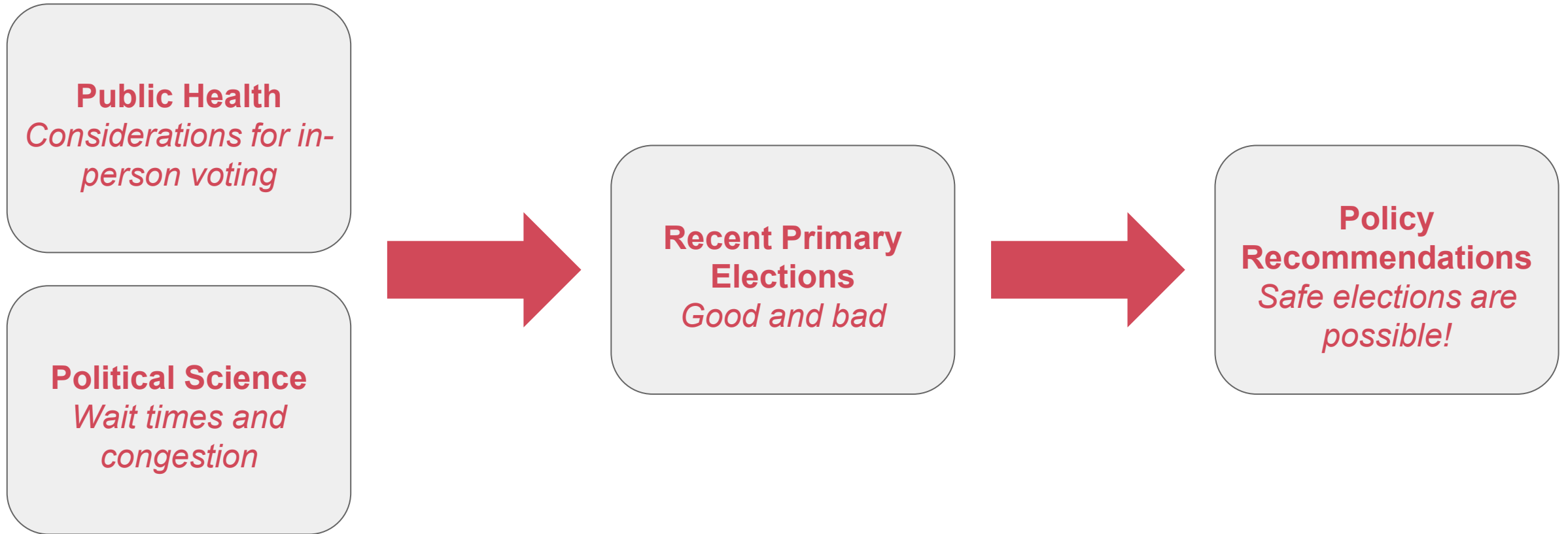
UCLA

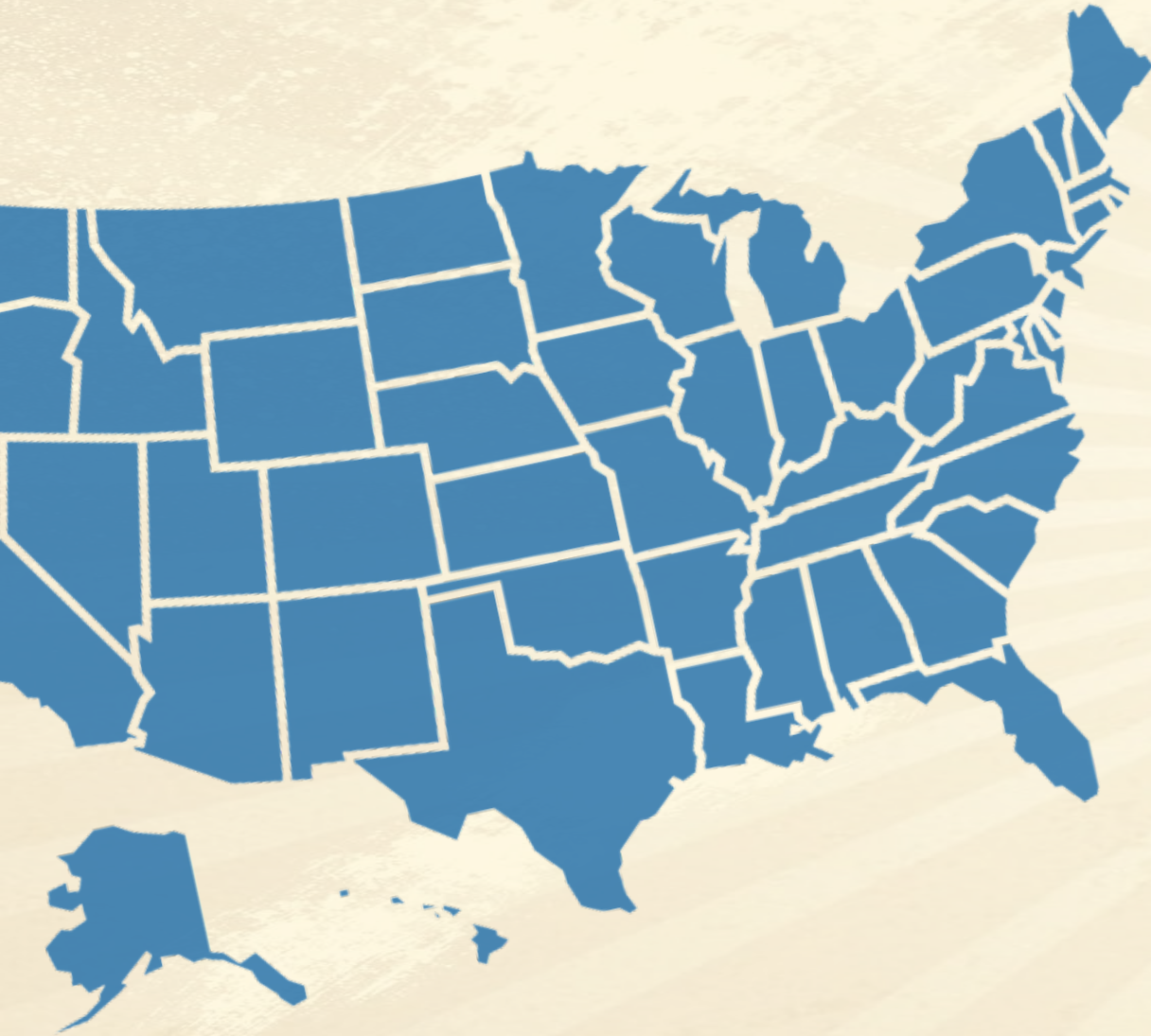
Latino Policy & Politics Initiative
**Voting Rights
Project**

**VOTING
RIGHTS
LAB**

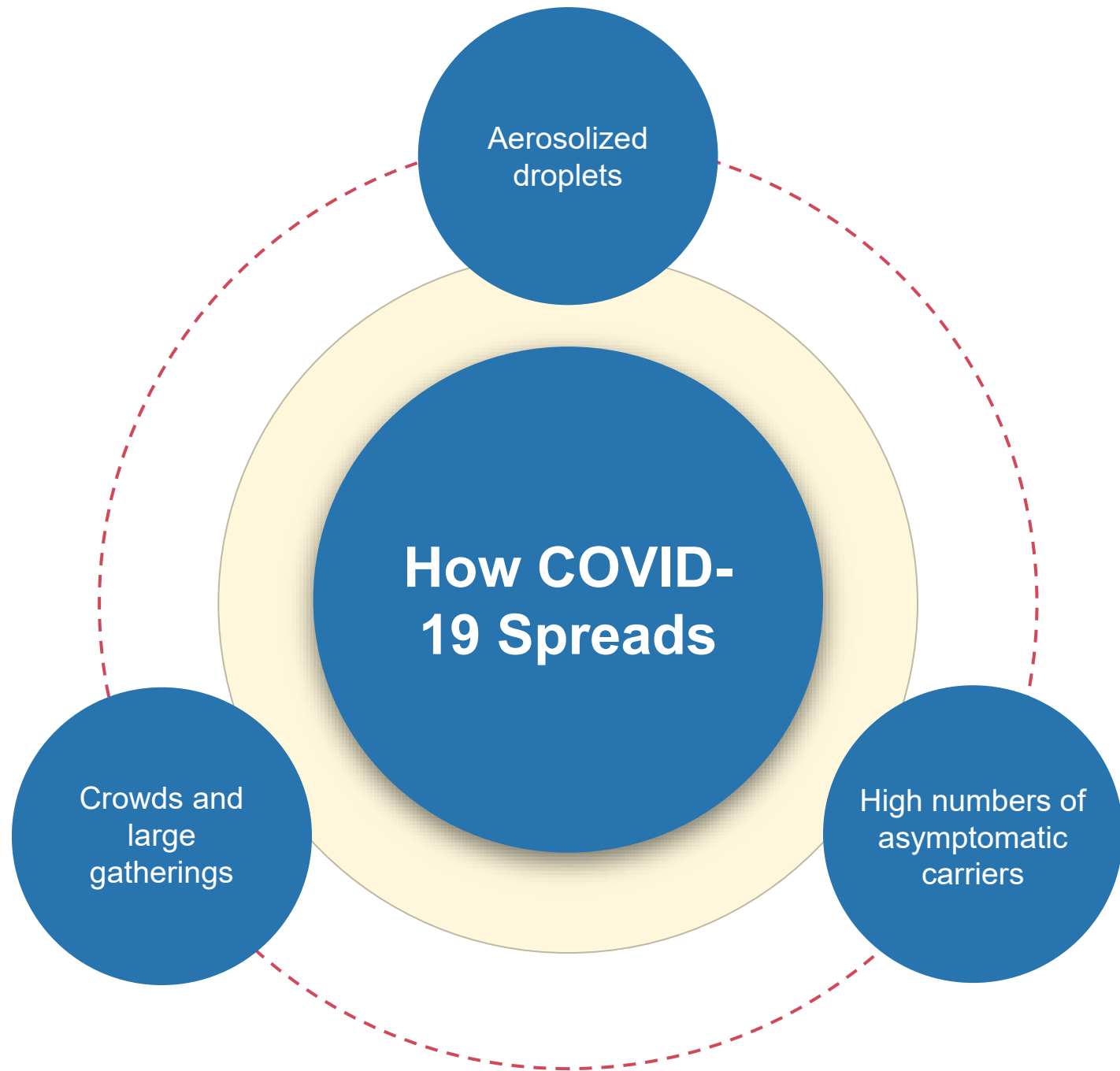
**[Union of
Concerned
Scientists**

REPORT OVERVIEW

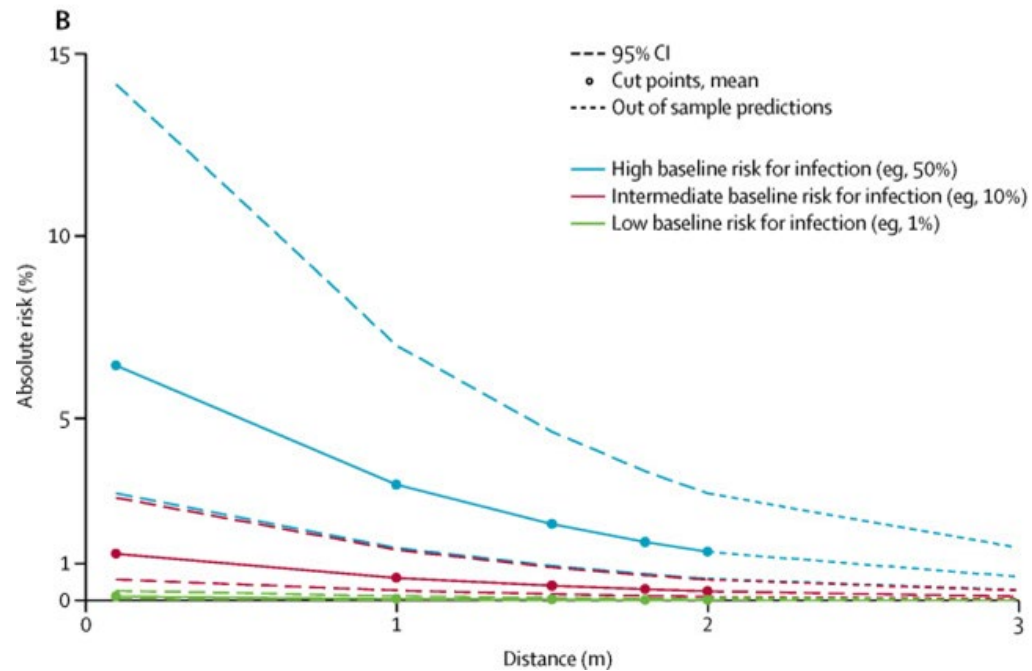




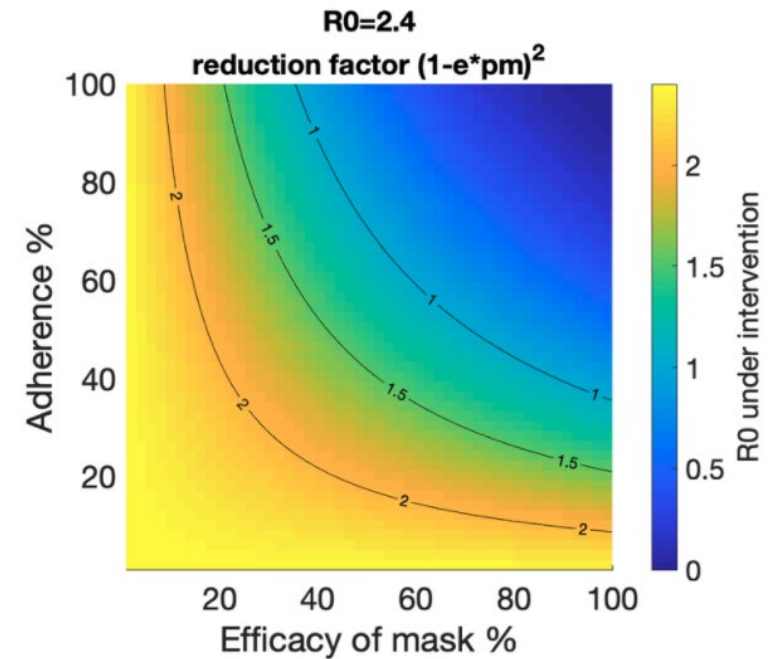
PUBLIC HEALTH CONSIDERATIONS FOR IN- PERSON VOTING



SOCIAL DISTANCING AND MASKS ARE CRITICAL

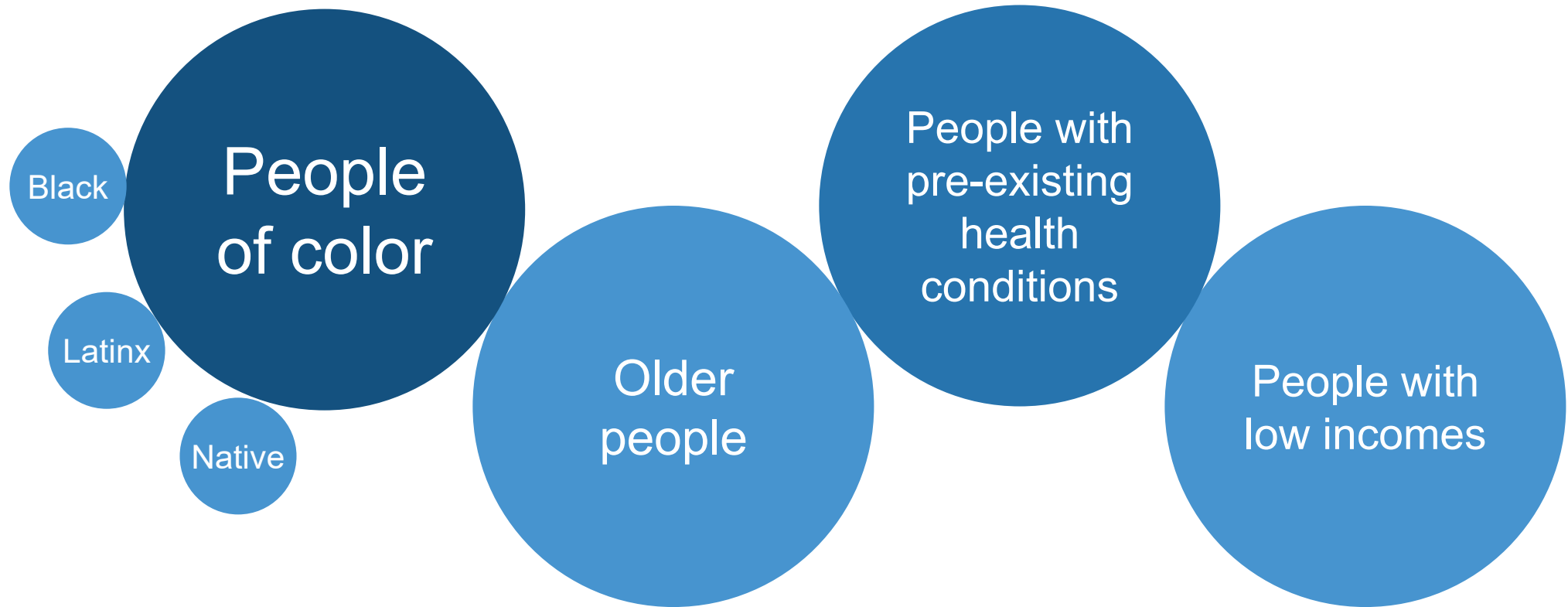


Chu et al., Lancet, 2020



Howard et al., preprint, 2020

POPULATIONS AT HIGH RISK



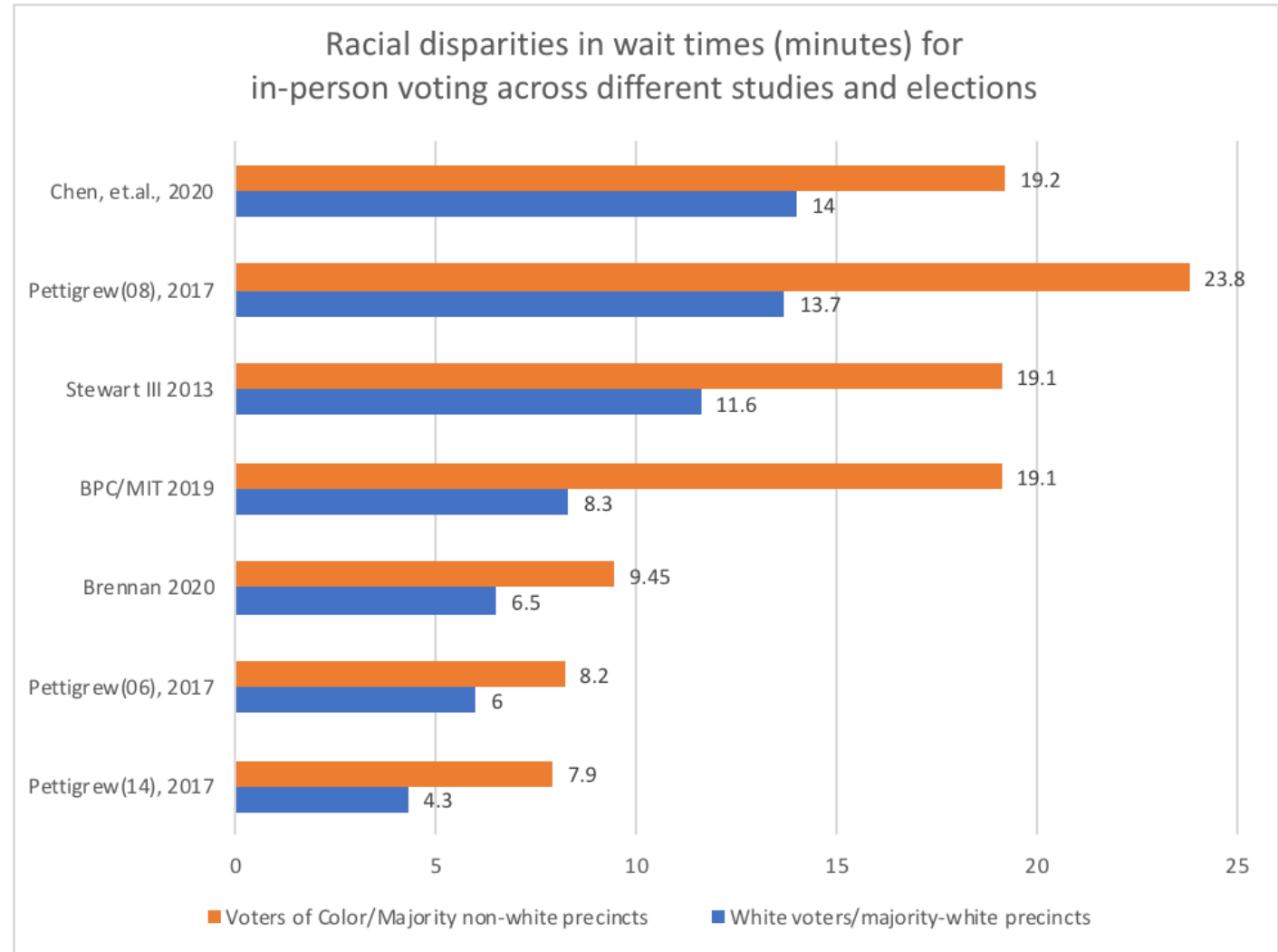
Poorly executed in-person voting could lead to COVID-19 transmission

- ➔ Long lines and wait times to vote, especially in Black and brown communities
- ➔ High amounts of staffing from persons that are usually over the age of sixty

WHAT WE KNOW ABOUT CONGESTION ON ELECTION DAY



Voters of color experience longer wait times



REDUCING LINES, WAIT TIMES, AND CROWDING

1

**Number of
options**

2

**Days and
hours of
locations**

3

**Points of
service**

4

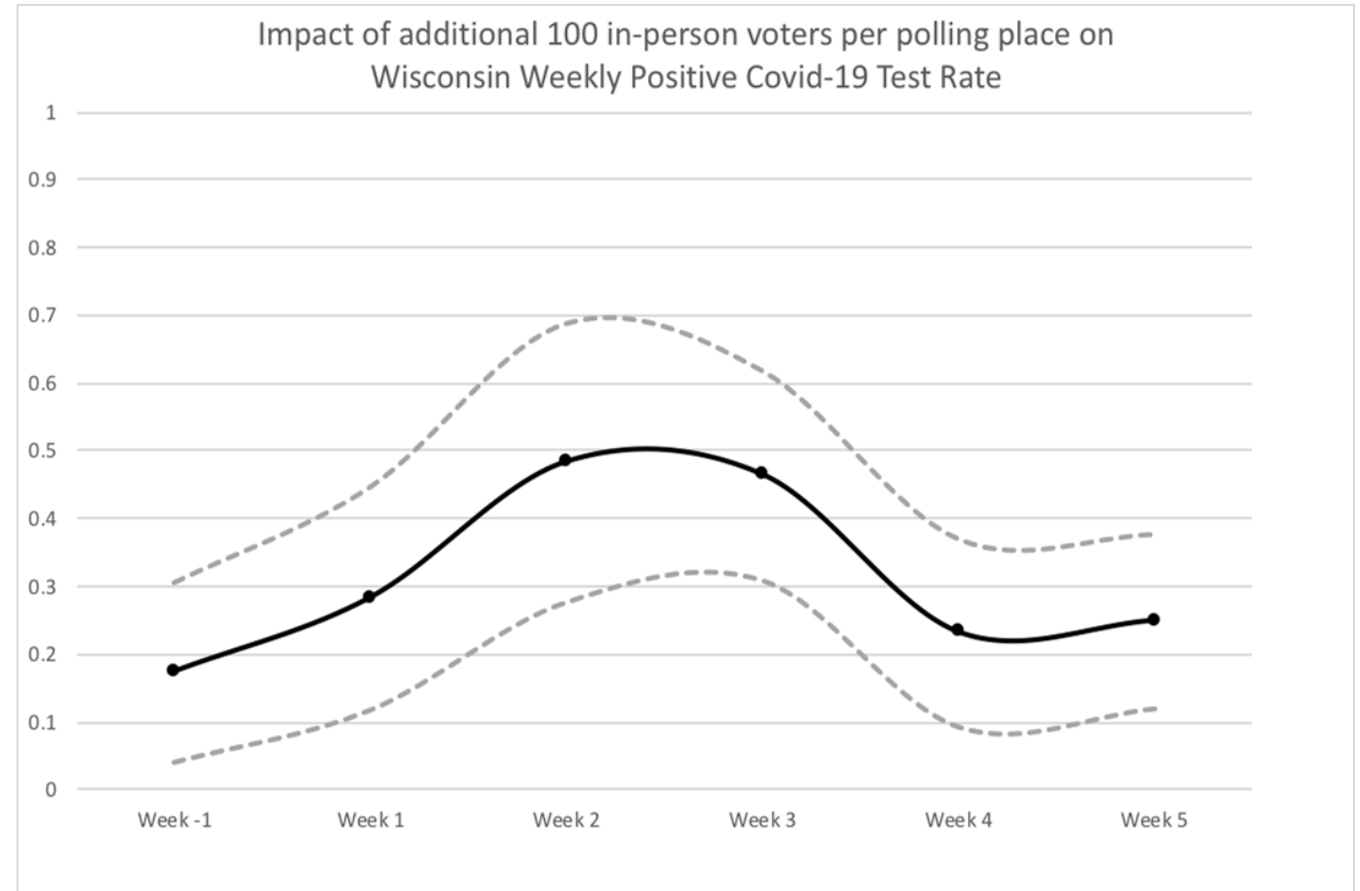
**Transaction
times**



2020 PRIMARY CASE STUDIES

Case study: Wisconsin

Lines and congestion

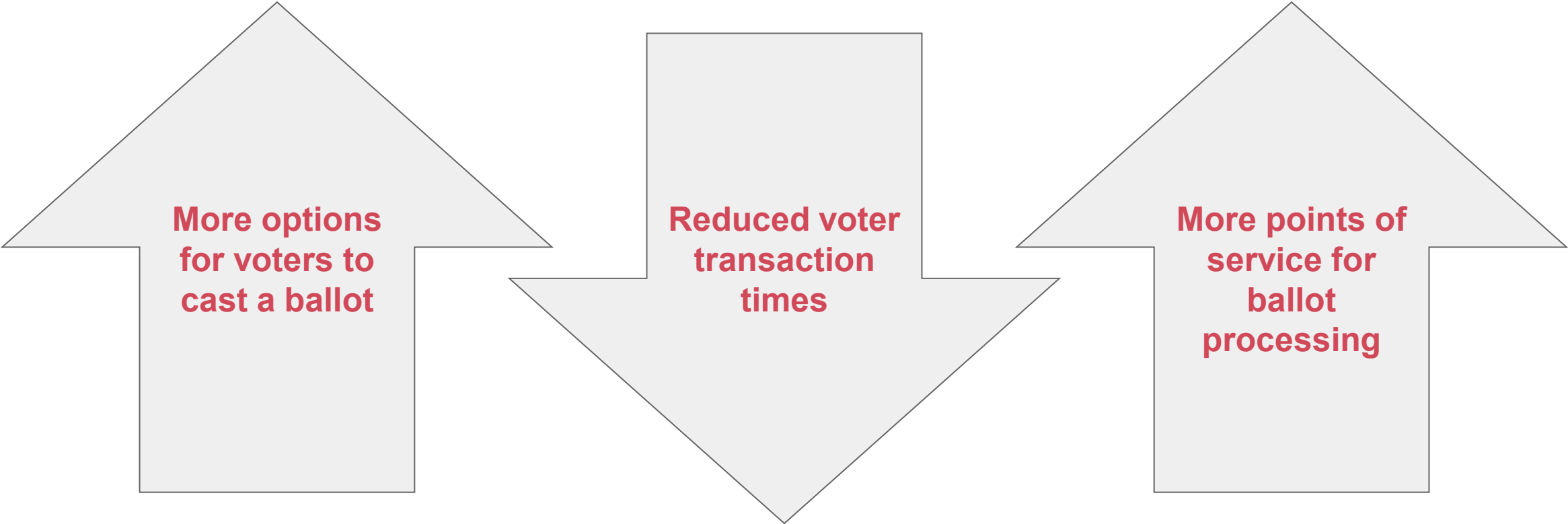


Case study: Nebraska

**No lines and
record turnout**

- ➡ Easy vote by mail
- ➡ Voter education
- ➡ Few polling places closures
- ➡ Safety kits for poll workers
- ➡ Clear sanitation procedures for polling places

LESSONS LEARNED FOR SAFE IN-PERSON VOTING



**More options
for voters to
cast a ballot**

**Reduced voter
transaction
times**

**More points of
service for
ballot
processing**

POLICY RECOMMENDATIONS FOR A SAFE ELECTION



Increase absentee ballot access

- ➡ Allow universal “no excuse” absentee voting
- ➡ Ease requirements for applying for an absentee ballot
- ➡ Ensure equity in access

Ensure safe in-person voting opportunities

Provide as
many polling
places as
possible

Increase points
of service and
reduce
transaction
times



Extend voting
days and
hours

Comply with
CDC best
practices for
safety

Priorities for polling place consolidation

- ➡ Prioritize equity and anticipated demand
- ➡ Allow early voting
- ➡ Select larger buildings and multi-building campuses

EDUCATE VOTERS ABOUT CHANGES



Secretary of State Robert B Evnen



· April 23 ·

Urgent Reminder

Voter Registration
April 24th Last day postmark to register by mail
April 27th Last Day to register online

Westin Miller and Pam Wells Hoge like this.

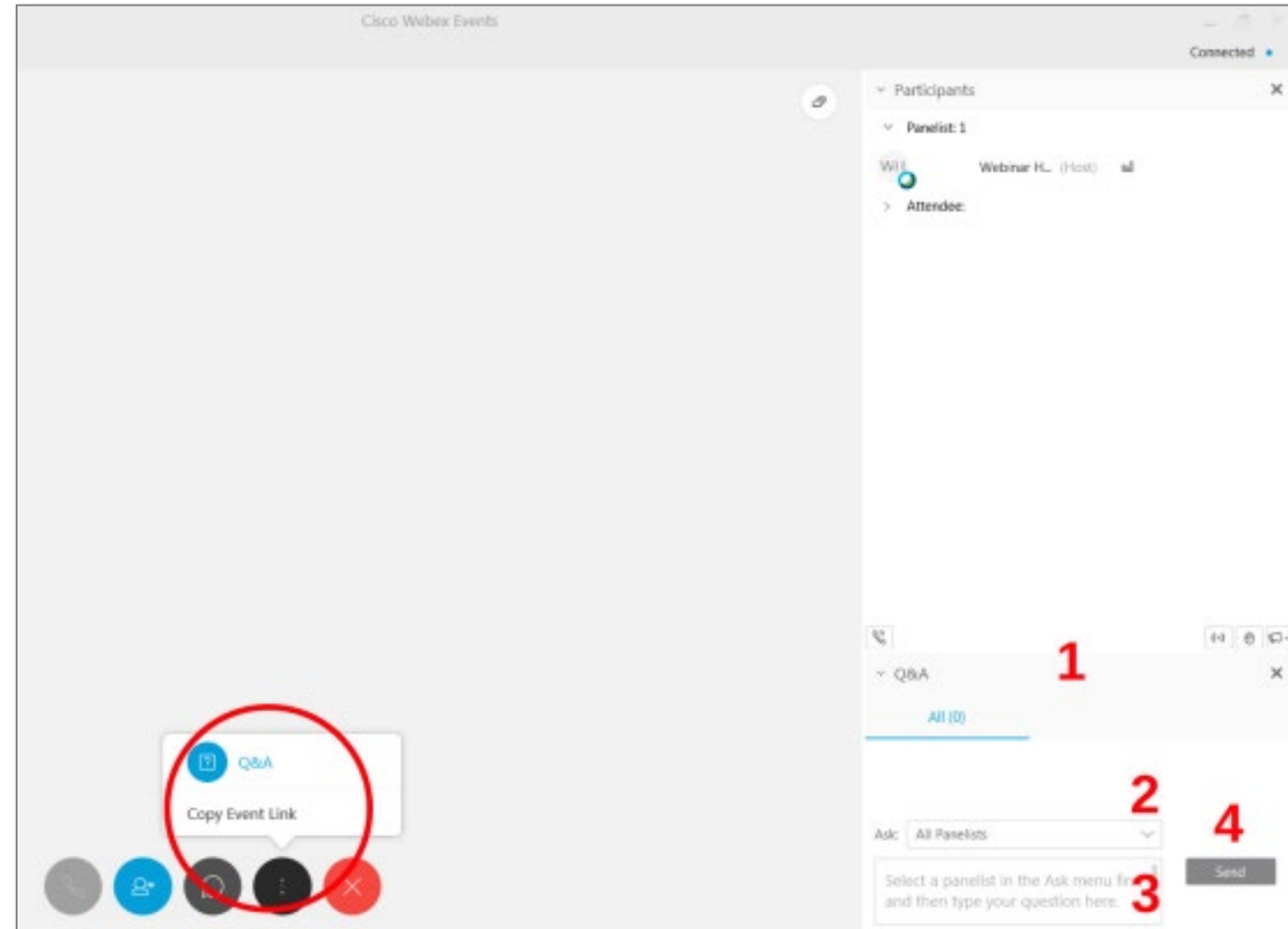
1 Share

COVID-19: Protecting Voter Health and Participation in the 2020 Elections

Ryan Snow

How to Use WebEx Q & A

1. Open the Q&A panel
2. Select “All Panelists”
3. Type your question
4. Click “Send”



Thank you for attending

For a recording of this webinar and information about future webinars, please visit networkforphl.org/webinars

Increased Access to Medications for Opioid Use Disorder during the COVID-19 Epidemic and Beyond
July 23, 2 – 3:30pm ET

COVID-19: Real-Time Guidance, Resources and Information

View resources & request assistance at networkforphl.org/covid19

2020 Public Health Law Virtual Summit
COVID-19 Response and Recovery
September 16 – 17, 2020
networkforphl.org/summit

